

[Click here](#) to view online | [Subscription](#) for these emails
To ensure delivery to your inbox, please add us to your address book



2024 Round up

We've had a busy 2024 here at Teachers' Pensions.

Read our round up where we share some of our achievements.

[View round up](#)

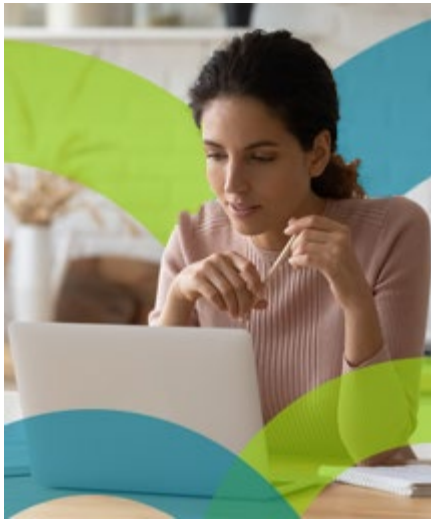


Start your year right, with our free employer training

Throughout 2025, we'll be hosting many training sessions to help you administer the Scheme.

The sessions will include: weekly webinar training, MCR surgeries, employer drop-in sessions and videos. These have specifically been designed to help you receive our support with any challenges you have.

[Register now](#)



Employer Secure Messaging - using invalid emails

We'd like to remind you, if an email address you used to use to contact us is now no longer available, you should be using Employer Secure Messaging to contact us.

We've received contact from some of you via email addresses that aren't related to the query.

Although there're remaining emails for specific queries, we'd like to emphasise that any we receive that aren't related won't be responded to.

[Read more](#)



Training Round up 2024

We had a great year with our training sessions in 2024, with over 6,000 of you registering.

Read our 2024 round up to see some of our achievements and the feedback we've received.

[View round up](#)

FURTHER NEWS

Update on delayed CETVs

Some members of the Teachers' Pension Scheme who've applied for a Cash Equivalent Transfer Value (CETV) will be aware of delays in providing figures.

We've provided an update on the delay in our full story.

[Learn more](#)

Proposed changes to contributions

The Department for Education has published a consultation on proposed amendments to the Teachers' Pension Scheme regulations.

Read our full story to ensure you're aware of the impacts the changes may have on you and our members.

[Read full story](#)

Join our Employer Forum

Previously, we've mentioned signing up to our Employer Forum where we'll share ideas and gather feedback from employers like you who administer the Scheme.

As part of this, we're setting up an online forum where we'll share ideas and gather feedback from those of you who work on the Scheme.

[Sign up today](#)

OTHER NEWS

Finance update

Please take some time to read January's finance update.

We cover: Audited End of Year Certificate (EOYC), Maternity Pay, Added Pension/Early Buyout and Payment of Arrears Invoices.

[Read update](#)

Employer Secure Messaging - uploading file error

If you're experiencing issues when attaching documents to a message, it's important to follow the required naming conventions.

File names must only contain the alphanumeric characters (A-Z, a-z or 0-9) or hyphens (-).

File names shouldn't have any spaces between words, for example it should be 'annualallowance' and not 'annual allowance'.

[Read more](#)

New member guide - Understanding your teacher's pension

We've created a new online guide for members to support them with further understanding their pension.

We shared the guide with members in the member newsletter, we'd also like to encourage you to mention it to your staff and remind them to familiarise themselves with it.

[View the guide](#)



[Contact Us](#) | [Glossary](#) | [Legal](#) | [Department for Education](#)

Copyright © Teachers' Pensions 2025 All rights reserved.
Pension Scheme Registry Number 10005209 (2010 scheme and earlier); and 10276733 (2015 scheme)

[Click here](#) to view online | [Subscription](#) for these emails

The content of this email is based on our understanding of the current legislation governing the Teachers' Pension Scheme. In the event that there is a disagreement between the content of this email and the overriding Regulations, then the content of the Regulations will take precedence. The benefits of the Teachers' Pension Scheme, and the tax treatment of pensions may be subject to change in the future.

