



OCTOBER 2019



MCCLLOUD CASE – BE REASSURED ABOUT YOUR PENSION

A recent **legal case** brought by members of the Judicial and Firefighters' pension schemes found that their schemes were discriminatory to some members. This was on the grounds of age discrimination when the career average arrangement was introduced in 2015.

The Government is considering the next steps to apply the court ruling and how this will apply to the Teachers' Pension Scheme.

[Find out more](#)

[RETURN TO TOP ^](#)



CHANGES TO REGULATIONS

Changes to certain Scheme regulations came into force this September. These included changes to provisions for same sex partners.

[Find out more](#)[RETURN TO TOP ^](#)

MAKE THE MOST OF MY PENSION ONLINE

Why not use our MPO calculators to get an estimate of what your pension could be worth? You can also see what your family could receive if anything were to happen to you.

[Log into MPO](#)[RETURN TO TOP ^](#)

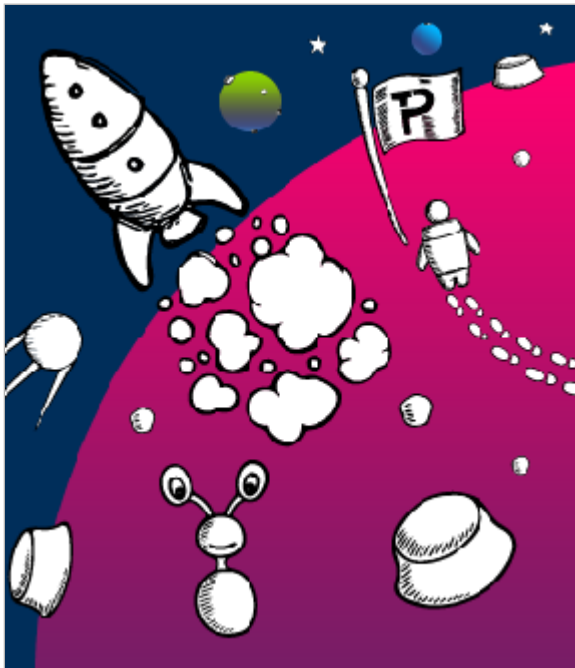
SHARE YOUR THOUGHTS

The Department for Education recently published a consultation looking at the opportunities to change the rules for Independent schools only, allowing for current members to remain in the Scheme even if new employees aren't eligible.

For more information about the proposal and to give your views take a look at our news story.

[Learn more](#)

[RETURN TO TOP ^](#)



WELCOME TO OUR NQTS

If you've just started as an NQT we hope your first term is going well and that you're settling in. Take a look at our NQT hub and find out about how you're already saving for your life after work.

[NQT Hub](#)

[RETURN TO TOP ^](#)

GET READY FOR FAMILY LEAVE

If you're getting ready for family leave it's important to know what this means for your pension to make the right decision for you and your loved ones. Read our example case study for further information.

[Learn more](#)





LET'S TALK

We're constantly striving to make our communications as simple and consistent as possible. We'd love to hear your feedback on what you think of our current communications, as well as giving us your thoughts on our plans for the future.

All you need to do is complete our short survey and your feedback will be used to help shape the future of Teachers' Pensions communications.

[Complete the survey](#)

[RETURN TO TOP ^](#)



Copyright © Teacher's Pensions 2019. All rights reserved.

Pension Scheme Registry Number 10005209 (2010 scheme and earlier); and 10276733 (2015 scheme)

[Click here to view online](#) | [Subscription for these emails](#)

The content of this email is based on our understanding of the current legislation governing the Teachers' Pension Scheme. In the event that there is a disagreement between the content of this email and the overriding Regulations, then the content of the Regulations will take precedence. The benefits of the Teachers' Pension Scheme, and the tax treatment of pensions may be subject to change in the future.

