

Stay up to date with  
your teacher's pension.

[Click here](#) to view online | [Subscription](#) for these emails  
To ensure delivery to your inbox, please add us to your address book



[LOG IN](#)



## Check out our new online Hub

We've created a new Hub on our website dedicated to those who aren't teachers in the Scheme but will interact with us in some way. This may be because they have a dependent's pension, have Pension Credit with us or are an Independent Financial Advisor.

The new Hub provides key details on what they'll need to know and do in their circumstances.

Please take a look and let your loved ones know about it.

If you've any feedback about our new Hub, [please let us know](#).

(This is a new section and we'll be regularly reviewing and updating it).

[View our Relatives and advisors Hub](#)



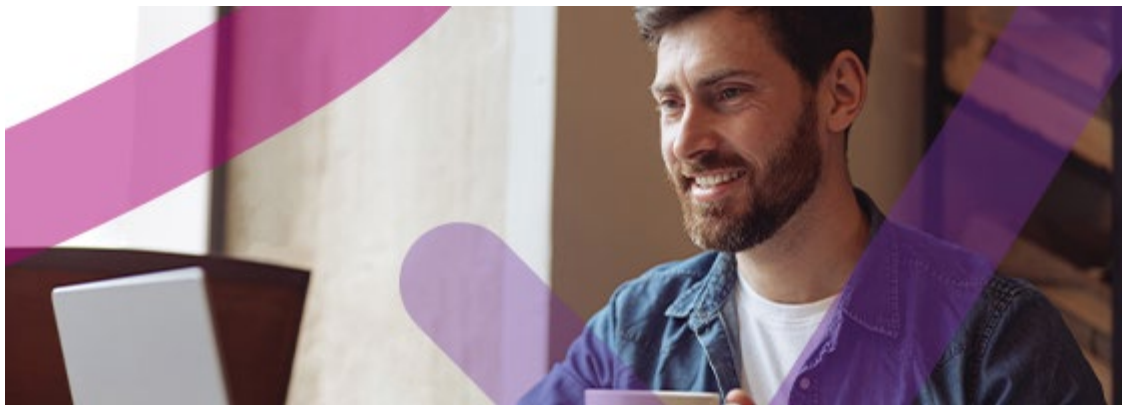
## Get to know your pension

Pensions can seem complicated.

So, we've created a guide to help you understand your Defined Benefit scheme and how your pension builds up.

It only takes a few minutes to read, so why not download it today?

**Learn more about your teacher's pension**



## Your Benefit Statement

It's easy to keep up to date with your pension by regularly viewing your Benefit Statement. It gets updated each month with your latest service and salary information. It's important to check it regularly, to make sure all your information is correct.

Keep an eye out in early 2025 when we'll be making further improvements to your Benefit Statement. We'll let you know on our website when these changes have been made.

If you don't have a My Pension Online account, [register on our website](#).

**Check out your latest pension estimate**



## CETV update

We're aware that some members have been impacted by a delay in providing Cash Equivalent Transfer Values (CETVs) and Pension Sharing Orders (PSOs).

We recently provided an update about this on our website.

[View our latest update](#)



## Get help with MPO

Following the introduction of Multi Factor Authentication for My Pension Online (MPO), we've created a guide to help you navigate the changes and easily get logged into your MPO account.

The guide provides information on how to set up MFA, resetting your details and what to do if you're struggling to log in.

[Get help with My Pension Online](#)



## More than just pensions

We're here to support you throughout your teaching career.

That's why we have our Lifestyle Hub. It provides resources for money management, financial and mental health support as well as retirement stories from other teachers.

**Get support and inspiration  
from our Lifestyle Hub**



## Follow us on YouTube

Some people prefer videos to reading guides. That's why we've been updating our YouTube channel to cover as many pension topics as possible.

We've recently added videos about using our new personalised calculator and what to do if you've missing service. These accompany our existing videos such as maternity leave, ill-health, applying for retirement and much more.

**Visit our YouTube channel and subscribe**

[www.teacherspensions.co.uk](http://www.teacherspensions.co.uk)



Copyright © Teachers' Pensions 2024 All rights reserved.  
Pension Scheme Registry Number 10005209 (2010 scheme and earlier); and 10276733 (2015 scheme)

[Click here](#) to view online | [Subscription](#) for these emails

The content of this email is based on our understanding of the current legislation governing the Teachers' Pension Scheme. In the event that there is a disagreement between the content of this email and the overriding Regulations, then the content of the Regulations will take precedence. The benefits of the Teachers' Pension Scheme, and the tax treatment of pensions may be subject to change in the future.

