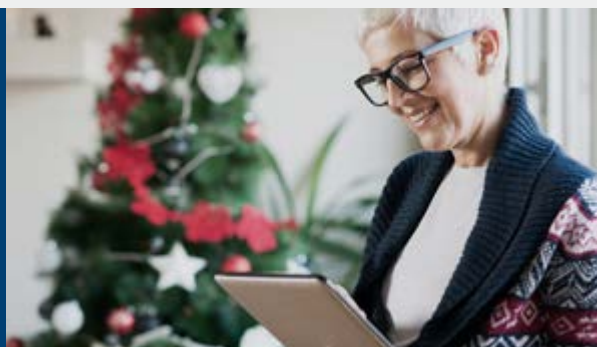


Hello

Read this e-newsletter to keep up to date with all the latest Teachers' Pension Scheme news and changes.



SEASON'S GREETINGS

Merry Christmas from Teachers' Pensions



Whether you've only just retired or have been enjoying life after teaching for a few years, we hope you're looking forward to the upcoming festivities.

According to the Greeting Card Association over 100 million single Christmas cards were sold in 2017. That in itself is just a small reflection of how busy this time of year can be.

With so much to think about and do in December, it's easy to forget about other things. To help keep on track with your pension we've created this short newsletter with all the information you need.

SCHEME NEWS AND UPDATES

[Christmas opening hours](#)

[Re-employment](#)



Over Christmas we'll be closed on Christmas Day, Boxing Day and New Year's Day. Normal opening hours, 8.30am - 6pm, will resume from 2 January 2019.

With your My Pension Online (MPO) account you can contact us anytime through secure messaging.

We also have a social media contact team who can help you with general queries during opening hours.

If you don't have an account and need to get in touch it's simple to [register](#).

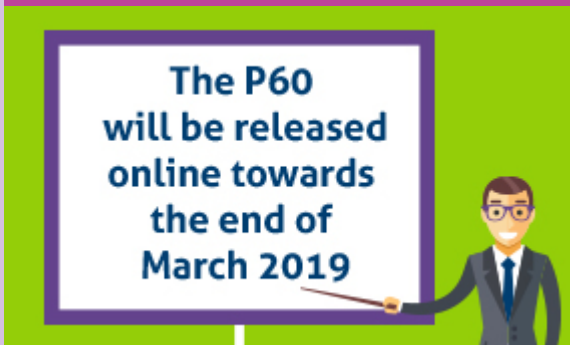


With the New Year looming you might be looking for a new challenge. If you decide to return to teaching it's important to understand whether you need to let us know.

In past years you'd have needed to complete a Certificate of Re-employment; however, you'll no longer need to do this in the majority of cases*. Due to the new way we collect data from your employer you'll only need to complete a form if we get in touch.

*However, it's important to note that if you've been in re-employment in a previous tax year, and are yet to submit a Certificate for that year, you're still required to do so.

P60 2018/19



The P60 for the 2018/19 tax year will be released online towards the end of March 2019. We'll let you know on our website when it's available.

For those people who have not received a payment which has been taxed in 2018/19 a P60 will not be created.

Where to find your P60



If you complete a self-assessment tax return for HMRC please be aware that the online [deadline](#) is 31 January 2019.

If you need your 2017/18 P60 or payslips to complete your tax return, they can be found online via your [MPO account](#), where you can download a PDF copy to use for reference or print if necessary.

Did you know?

Last December we processed **1,893** retirement applications to ensure our members celebrated into the New Year.

WORKING FOR YOU

What you need to know about pension scams



Unfortunately, the frequency of pension scams is on the increase.

Whilst the Government has proposed measures to protect individuals with pensions, there are a number of things you can do to protect yourself.

[The Pensions Regulator](#) has more information online and they've created this handy [factsheet](#) to ensure you're kept up to date.

Support other teachers this Christmas



Education Support Partnership is the UK's only charity providing mental health and wellbeing support services to everyone working in education. One of their services is a completely free 24/7 helpline. Staffed by qualified counsellors anyone who, currently or who has ever, worked in education can call them when they need to talk.

The free helpline can only answer calls thanks to kind donations. To find out more about someone who recently used the helpline, and how you can support the charities work, you can find all the information you need [here](#).

You can keep up to date with important news, events and much more via our social media channels. Click the icons to follow us.



[Register](#) or [log in to](#) My Pension Online today.



Contact us:
0345 6066166 | 8.30am - 6pm Monday to Friday

Copyright © Teachers' Pensions 2018 All rights reserved.
Pension Scheme Registry Number 10005209 (2010 scheme and earlier); and 10276733 (2015 scheme)

The content of this email is based on our understanding of the current legislation governing the Teachers' Pension Scheme. In the event that there is a disagreement between the content of this email and the overriding Regulations, then the content of the Regulations will take precedence. The benefits of the Teachers' Pension Scheme, and the tax treatment of pensions may be subject to change in the future.