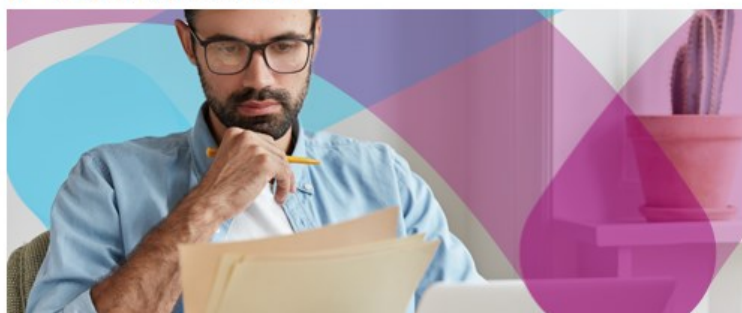


Teachers' Pensions Cookie Preferences

We use cookies to give the best experience on our site. Some essential cookies are needed to make the site work and we'd also like to set some additional ones to understand how you use the site, when accessed directly or via a third-party site, to help us improve the usability and services available. You can control these by clicking 'Manage Cookies'. Information on the cookies we use can be found on our [privacy page](#).

[Manage Cookies](#)[Accept All Cookies](#)[For Members](#) [For Employers](#)[Member Registration](#) [Log in](#)**Teachers' Pensions** | For Employers[Resources](#) [Training](#) [Videos](#) [FAQs](#) [Calculators](#) [Forms](#) [News](#)[Advising members](#)[Managing members](#)[Member retirement](#)[Scheme changes](#)[Employer Portal](#)[Employer resources](#)[New to Teachers' Pensions](#)[What do I need?](#)[Keeping up to date](#)[Independent Schools](#)[Employer forms](#)[Employer factsheets](#)[Employer Support team](#)[Training](#)[Factors and guidance](#)[Employer Bulletin](#)[MCR Bulletin](#)[Payroll Bulletin](#)[Guides](#)[Employer Portal Guide](#)[References](#)[Employer Toolkit](#)[Employer A to Z](#)

New to Teachers' Pensions



The Teachers' Pension Scheme is one of the best tools an employer has for attracting and retaining employees.

As a new employer to the Scheme, this section will help you to understand what is required for you to start administering the Scheme.

Thankfully, there's plenty of support available to help you understand your responsibilities and you'll find most of it here and on our **Employer Hub**. We'd also suggest you read our responsibilities checklist.

> [Read our useful MDC responsibilities checklist guide \(PDF, 293 KB\)](#)

> [Read our useful MCR responsibilities checklist guide \(PDF, 200 KB\)](#)

What you should know

Here are five basic things you should know from the start about the Scheme you now administer.

- The Teachers' Pension Scheme is a statutory occupational pension scheme and all employees (full-time or part-time) between the ages of 16 and 75 are automatically members - unless they formally opt out
- Once your school is outside of Local Authority control, you're responsible for deducting your teachers' pension contributions from their salary and transferring them to us. As their employer, you're also responsible for paying us the employer's share of the contributions too. All of this has to happen monthly, no later than the 7th of the month following the deduction of the contributions
- Managing your teachers' questions, requests and expectations is a big part of the scheme. You won't need to know all the answers. But you'll need to know where to direct them to if you don't. We can help you with that
- Accurate and secure information management is essential. We issue members with personalised information and pay their pensions using details collected and sent to us by employers. It has to be correct
- Finally, the administration of the Teachers' Pension Scheme is subject to statutory requirements, supervised by the Pensions Regulator. They have the power to impose fines on schemes and employers (and their individual managers) who fail to adhere to

Related Information

> [Employer Portal](#)

> [Answer a question](#)

Latest News

The latest policy updates and announcements about the scheme and the news that affects it:

> [Updating your contact details](#)

> [Important information about Additional Voluntary Contributions](#)

> [End of Year Certificate](#)

> [More News](#)

employers (and their individual managers) who fail to adhere to them.

Read more about what's next:

- > [What do I need as a new employer of the Teachers' Pension Scheme?](#)
- > [Information for new Independent Schools within the Teachers' Pension Scheme](#)
- > [Keeping up to date with Teachers' Pensions](#)

Have a query?

We've a dedicated team at Teachers' Pensions to support you in carrying out your roles and responsibilities. Our Employer Support Team can provide support on all aspects of administering the Scheme. If you need their help, **visit our [contact options for further details](#)**.

However, if you have a query that relates to a specific member, then you'll need to contact our member helpline on 0345 606 6166.

Last Updated: 30/08/2023 12:04

Forms

Looking for a Form? Our forms page has everything you'll need to get started.

> [Forms](#)

Calculators

See how members pensions are built and explore the available options.

> [Calculators](#)

FAQ's

Find the answers with our range of Frequently Asked Questions.

> [FAQs](#)

Follow us on social media

Find us on social media to get the latest news and announcements from Teachers' Pensions



> [Like us on Facebook](#)



> [Join us on LinkedIn](#)



> [Follow us on X](#)



> [Subscribe to our YouTube channel](#)

[Contact Us](#) [Glossary](#) [Legal](#) [Privacy](#) [Security](#) [Accessibility](#) [Site Map](#) [Links](#) [Governance](#) [Department for Education](#)

Copyright © Teachers' Pensions 2025 All rights reserved. Pension Scheme Registry Number 10005209 (2010 scheme and earlier); and 10276733 (2015 scheme)