

Teacher's Pensions Cookie Preferences

We use cookies to give the best experience on our site. Some essential cookies are needed to make the site work and we'd also like to set some additional ones to understand how you use the site, when accessed directly or via a third-party site, to help us improve the usability and services available. You can control these by clicking 'Manage Cookies'. Information on the cookies we use can be found on our [privacy page](#).

Manage Cookies

Accept All Cookies

[For Members](#) [For Employers](#)

[Member Registration](#) [Log in](#)



[Lifestyle](#)
[Resources](#)
[Videos](#)
[FAQs](#)
[Calculators](#)
[Forms](#)
[News](#)

[New starter](#)
[Working life](#)
[Planning retirement](#)
[Once retired](#)
[Scheme changes](#)
[My Account](#)

We're experiencing high levels of contact, we appreciate your patience at this time.

Reckonable Service

Your reckonable service is any service that counts towards your benefits. It can include service from pensionable employment, any additional service previously purchased, and any service transferred into the Teachers' Pension Scheme from another pension scheme.

It's vitally important to check that your service details are correct as any errors may be time-consuming to rectify at a later date, resulting in delays or an under-payment of pension benefits. If there are any errors please contact the employer at the time of service and ask them to notify us of the correction. Please note errors can only be rectified by employers; Teachers' Pensions cannot alter service records without employer authorisation.

Last Updated: 01/05/2024 14:12

Forms

Ready to apply? Our forms page has everything you'll need to get started.

[Forms](#)

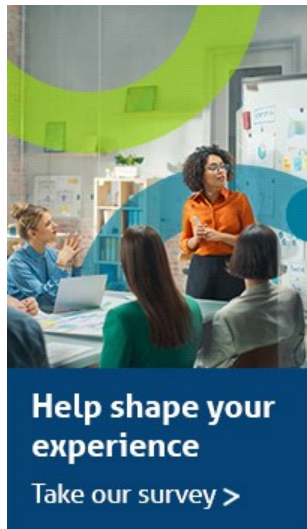
Calculators

Get an insight into how your pension is built and explore your options.

[Calculators](#)

FAQ's

Find the answers with our range of Frequently Asked Questions.



Follow us on social media

Find us on social media to get the latest news and announcements from Teachers' Pensions



> [Like us on Facebook](#)



> [Join us on LinkedIn](#)



> [Follow us on X](#)



> [Subscribe to our YouTube channel](#)

[Contact Us](#)[Manage Cookies](#)[Glossary](#)[Legal](#)[Privacy](#)[Security](#)[Accessibility](#)[Site Map](#)[Links](#)[Governance](#)[Department for Education](#)