



- [Resources](#)
- [Videos](#)
- [FAQs](#)
- [Calculators](#)
- [Forms](#)
- [News](#)

- [New starter](#)
- [Working life](#)
- [Planning retirement](#)
- [Once retired](#)
- [Scheme changes](#)
- [My Account](#)

Life as a new teacher



This content cannot be displayed in a frame

To help protect the security of information you enter into this website, the publisher of this content does not allow it to be displayed in a frame.

Having trouble with YouTube?

[➤ Watch it on Vimeo \(This link opens in a new window\)](#)

New to teaching? Our simple video guide gives you all the facts you'll need to know about how to make managing your new teachers' pension easy.

Registering for a MPO account? You'll need;

- A few personal details
- Your National Insurance number
- An email address - we recommend a personal email address

Useful links;

[➤ Registration \(This link opens in a new window\)](#)

[➤ New starter video \(This link opens in a new window\)](#)

Forms

Ready to apply? Our forms page has everything you'll need to get started.

[➤ Forms](#)

Calculators

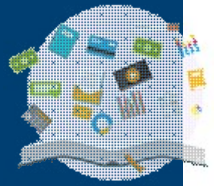
[> Calculators](#)

FAQ's

Find the answers with our range of Frequently Asked Questions.

[> FAQs](#)

Our videos



Looking for something else to watch, we've plenty of informative videos to help you understand your pension.

[> More videos](#)

Follow us on social media

Find us on social media to get the latest news and announcements from Teachers' Pensions



[> Like us on Facebook](#)



[> Join us on LinkedIn](#)



[> Follow us on Twitter](#)



[> Subscribe to our YouTube channel](#)

[Contact Us](#)

[Glossary](#)

[Legal](#)

[Privacy](#)

[Security](#)

[Accessibility](#)

[Site Map](#)

[Links](#)

[Governance](#)

[Department for Education](#)

personalise your web experience. By continuing to use our website without changing the settings, you are agreeing to our use of cookies

[Learn more](#)

[Close](#)