

Teacher's Pensions Cookie Preferences

We use cookies to give the best experience on our site. Some essential cookies are needed to make the site work and we'd also like to set some additional ones to understand how you use the site, when accessed directly or via a third-party site, to help us improve the usability and services available. You can control these by clicking 'Manage Cookies'. Information on the cookies we use can be found on our [privacy page](#).

Manage Cookies

Accept All Cookies



- Resources
- Training
- Videos
- FAQs
- Calculators
- Forms
- News

- Advising members
- Managing members
- Member retirement
- Scheme changes
- Employer Portal

Manage your members' pensions, perform key tasks and stay up to date with Scheme information.

- Task Manager
- Member Search
- Upload a File
- Templates

[Log in](#)

Eligibility
Who can join?
New starters
Cessation of contracting out
Full-time and part-time
Member Types
Opting in or out
Auto and Contractual Enrolment
Types of enrolment
Auto Enrolment templates

Life Events

Auto and Contractual Enrolment

This section of the site is intended to help you to understand when you may need to enrol an employee into the Scheme, and what forms and documentation you need to complete for us to make sure the employee's record is correct.

Visit our dedicated webpage for more information on the different types of enrolment.

Auto Enrolment

You reach your Staging Date or your Re-enrolment date

[Journey 1](#)

Contractual Enrolment

New / Amended contracts

- You hire an employee
- An employee's contract changes
- An employee joins you as a result of a TUPE transfer
- An employee joins you as a result of a New Fair Deal transfer
- An employee employed by you takes on an additional post

[Journey 2](#)

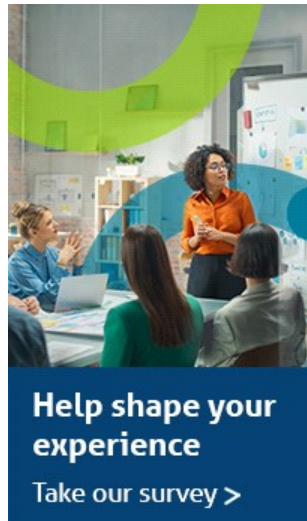
Auto Enrolment

A previously assessed employee, including those who opted out of contractual enrolment has become an eligible job holder.

[Journey 3](#)

Related Information

- [Employer Portal](#)
- [Answer a question](#)



Latest News

The latest policy updates and announcements about the scheme and the news that affects it:

- [Help shape your experience by taking this short survey](#)
- [We've made updates to the MCR template](#)
- [Multi Academy Trust and Academy submission](#)
- [More News](#)

Follow us on social media

Find us on social media to get the latest news and announcements from Teachers' Pensions



- [Like us on Facebook](#)



- [Join us on LinkedIn](#)



- [Follow us on X](#)



- [Subscribe to our YouTube channel](#)

