

Teacher's Pensions Cookie Preferences

We use cookies to give the best experience on our site. Some essential cookies are needed to make the site work and we'd also like to set some additional ones to understand how you use the site, when accessed directly or via a third-party site, to help us improve the usability and services available. You can control these by clicking 'Manage Cookies'. Information on the cookies we use can be found on our [privacy page](#).

Manage Cookies

Accept All Cookies

[For Members](#) [For Employers](#)

[Member Registration](#) [Log in](#)



[Lifestyle](#)
[Resources](#)
[Videos](#)
[FAQs](#)
[Calculators](#)
[Forms](#)
[News](#)

[New starter](#)
[Working life](#)
[Planning retirement](#)
[Once retired](#)
[Scheme changes](#)
[My Account](#)

Forms

[Applying for retirement](#)

Family and dependants

[Joining or leaving the Scheme](#)

[Managing your pension forms](#)

[Updates](#)

[Factsheets](#)

[Member training](#)

[Guides](#)

[Case studies](#)

[Deferred Member Newsletter](#)

[Member Newsletter](#)

[Pensioner Newsletter](#)

[Factors and Guidance](#)

[Member A to Z](#)

We're experiencing high levels of contact, we appreciate your patience at this time.

Family and dependants



Here you'll find online and downloadable forms about difficult periods in life including death and divorce.

Applications to cover additional service for family pensions

Complete this form if you've built up additional service and would like to include this in your family benefits.

To apply you'll need to [download the form \(PDF, 463 KB\) \(This link opens in a new window\)](#), print it, and send it to the address on the form.

Death notification and application for death benefits

If you're a beneficiary, please use this form to claim death benefits. You can also notify us of a death [using our online form](#).

To apply you'll need to [download the form \(PDF, 928 KB\) \(This link opens in a new window\)](#), print it, and send it to the address on the form.

Please don't complete both the online and paper form. Only one form is required.

Nomination for death grant

If you were to die before taking your retirement benefits a death grant may be payable. Use this form to nominate who you'd like to receive it.

[➤ Complete this form online.](#)

To apply by post you'll need to [download the form \(PDF, 288 KB\) \(This link opens in a new window\)](#), print it, and send it to the address on the form.

Notification of partner

In the event of your death your spouse or civil partner will automatically receive your pension. Use this form if you'd like to nominate a qualifying partner.

To apply you'll need to [download the form \(PDF, 349 KB\) \(This link opens in a new window\)](#), print it, and send it to the address on the form.

Nomination of financially dependent relative

In the event of your death your spouse or civil partner will automatically receive your pension. Use this form if you'd like to nominate a financially dependent relative.

➤ [Complete this form online.](#)

Pensions on divorce and dissolution: Request for cash equivalent transfer value (CETV)

Use this form to request a CETV as part of divorce proceedings.

Please see the [Pensions on divorce and dissolution: Administration charges factsheet \(PDF, 84 KB\) \(This link opens in a new window\)](#) for the latest costs.

➤ [Complete this form online.](#)

To apply by post you'll need to [download the form \(PDF, 233 KB\) \(This link opens in a new window\)](#), print it, and send it to the address on the form.

Last Updated: 04/04/2024 09:27

FAQ

Get your questions about family benefits answered.

➤ [Read our FAQs](#)

Factsheet

Please ensure you inform us of a member's death.

➤ [Download PDF \(PDF, 80 KB\) \(This link opens in a new window\)](#)

Video

Find out what you can do with MPO.

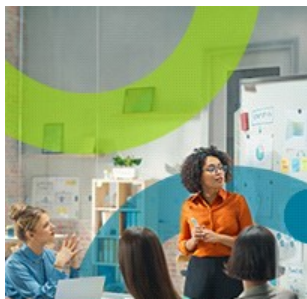
➤ [Watch our video](#)

Related Information

➤ [Life events](#)

➤ [Maternity Paternity and Family leave](#)

➤ [Videos](#)





Follow us on social media

Find us on social media to get the latest news and announcements from Teachers' Pensions



> [Like us on Facebook](#)



> [Join us on LinkedIn](#)



> [Follow us on X](#)



> [Subscribe to our YouTube channel](#)

[Contact Us](#)

[Manage Cookies](#)

[Glossary](#)

[Legal](#)

[Privacy](#)

[Security](#)

[Accessibility](#)

[Site Map](#)

[Links](#)

[Governance](#)

[Department for Education](#)

Copyright © Teachers' Pensions 2024 All rights reserved. Pension Scheme Registry Number 10005209 (2010 scheme and earlier); and 10276733 (2015 scheme)