

Teacher's Pensions Cookie Preferences

We use cookies to give the best experience on our site. Some essential cookies are needed to make the site work and we'd also like to set some additional ones to understand how you use the site, when accessed directly or via a third-party site, to help us improve the usability and services available. You can control these by clicking 'Manage Cookies'. Information on the cookies we use can be found on our [privacy page](#).

Manage Cookies

Accept All Cookies

[For Members](#) [For Employers](#)

[Member Registration](#) [Log in](#)



[Resources](#)

[Training](#)

[Videos](#)

[FAQs](#)

[Calculators](#)

[Forms](#)

[News](#)

[Advising members](#)

[Managing members](#)

[Member retirement](#)

[Scheme changes](#)

[Employer Portal](#)

Manage your members' pensions, perform key tasks and stay up to date with Scheme information.

[Task Manager](#)

[Member Search](#)

[Upload a File](#)

[Templates](#)

[Log in](#)

[Latest News](#)

[Transitional Protection News](#)

[Archive](#)

Important information about the Opt Out form

From 1 February 2017 we'll no longer accept applications to opt out of the Scheme that use the December 2013 version of the form.

The correct version to use is June 2016; the version of the form can be found [here](#). Where applications are received on or after 1 February 2017 using the December 2013 version they will be rejected.

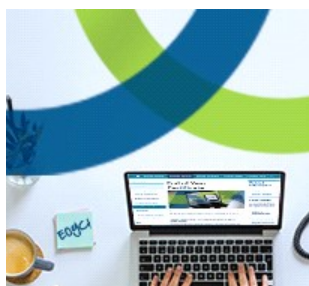
It's a member's responsibility to ensure that the correct version of the form is used. For this reason we strongly recommend that they use the online web application which can be accessed [here](#).

Failure to use the correct version of the form will result in delays in accepting their application to opt-out of the scheme and both the member and you will remain liable for your respective contributions to the scheme in the intervening period. Elections are effective from the first day of the month after the month in which Teachers' Pensions receive a correctly completed application

Last Updated: 12/07/2019 15:25

Related Information

[Related Information for Check out our new calculator](#)





Latest News

The latest policy updates and announcements about the scheme and the news that affects it:

- > [We've made updates to the MCR template](#)
- > [Multi Academy Trust and Academy submission](#)
- > [Contributions drop-in session](#)
- > [More News](#)

Follow us on social media

Find us on social media to get the latest news and announcements from Teachers' Pensions



> [Like us on Facebook](#)



> [Join us on LinkedIn](#)



> [Follow us on X](#)



> [Subscribe to our YouTube channel](#)

[Contact Us](#)
[Manage Cookies](#)
[Glossary](#)
[Legal](#)
[Privacy](#)
[Security](#)
[Accessibility](#)
[Site Map](#)
[Links](#)
[Governance](#)
[Department for Education](#)

Copyright © Teachers' Pensions 2024 All rights reserved. Pension Scheme Registry Number 10005209 (2010 scheme and earlier); and 10276733 (2015 scheme)