

# Teacher's Pensions Cookie Preferences

We use cookies to give the best experience on our site. Some essential cookies are needed to make the site work and we'd also like to set some additional ones to understand how you use the site, when accessed directly or via a third-party site, to help us improve the usability and services available. You can control these by clicking 'Manage Cookies'. Information on the cookies we use can be found on our [privacy page](#).

Manage Cookies

Accept All Cookies

[For Members](#) [For Employers](#)

[Member Registration](#) [Log in](#)



[Resources](#)

[Training](#)

[Videos](#)

[FAQs](#)

[Calculators](#)

[Forms](#)

[News](#)

[Advising members](#)

[Managing members](#)

[Member retirement](#)

[Scheme changes](#)

[Employer Portal](#)

Manage your members' pensions, perform key tasks and stay up to date with Scheme information.

[Task Manager](#)

[Member Search](#)

[Upload a File](#)

[Templates](#)

[Log in](#)

[Latest News](#)

[Transitional Protection News](#)

[Archive](#)

## GMP update

The GMP reconciliation of Deferred, Pensioner and Active members continues and good progress is being made with over 370k members records investigated to date. Conflicts relating to service continue to be raised with HMRC and responses are being received. Analysis on the responses is ongoing to determine which conflicts are now resolved and which require further investigation.

Employer contact may be necessary in the future to aid with queries relating to service and National Insurance numbers. We remain aware of the need to keep Employer contact to a minimum and will ensure all other options have been exhausted. We will continue to provide updates via the Bulletin.

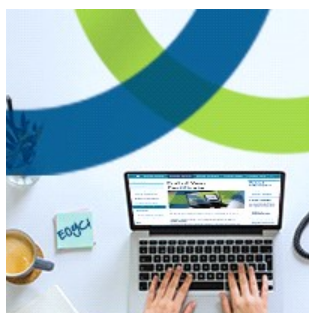
Last Updated: 30/01/2019 13:20

## Related Information

[➤ Employer Portal](#)

[➤ Videos](#)

[➤ News archive](#)





**Get ready for  
EOYC**

[Find out more >](#)

---

## Latest News

The latest policy updates and announcements about the scheme and the news that affects it:

- [➤ We've made updates to the MCR template](#)
- [➤ Multi Academy Trust and Academy submission](#)
- [➤ Contributions drop-in session](#)
- [➤ More News](#)

## Follow us on social media

Find us on social media to get the latest news and announcements from Teachers' Pensions



[➤ Like us on Facebook](#)



[➤ Join us on LinkedIn](#)



[➤ Follow us on X](#)



[➤ Subscribe to our YouTube channel](#)

---

[Contact Us](#)  
[Manage Cookies](#)  
[Glossary](#)  
[Legal](#)  
[Privacy](#)  
[Security](#)  
[Accessibility](#)  
[Site Map](#)  
[Links](#)  
[Governance](#)  
[Department for Education](#)

Copyright © Teachers' Pensions 2024 All rights reserved. Pension Scheme Registry Number 10005209 (2010 scheme and earlier); and 10276733 (2015 scheme)