

Teacher's Pensions Cookie Preferences

We use cookies to give the best experience on our site. Some essential cookies are needed to make the site work and we'd also like to set some additional ones to understand how you use the site, when accessed directly or via a third-party site, to help us improve the usability and services available. You can control these by clicking 'Manage Cookies'. Information on the cookies we use can be found on our [privacy page](#).

Manage Cookies

Accept All Cookies

[For Members](#) [For Employers](#)

[Member Registration](#) [Log in](#)



[Resources](#)
[Training](#)
[Videos](#)
[FAQs](#)
[Calculators](#)
[Forms](#)
[News](#)

[Advising members](#)
[Managing members](#)
[Member retirement](#)
[Scheme changes](#)
[Employer Portal](#)

Manage your members' pensions, perform key tasks and stay up to date with Scheme information.

[Task Manager](#)
[Member Search](#)
[Upload a File](#)
[Templates](#)

[Log in](#)

[Latest News](#)

[Transitional Protection News](#)

[Archive](#)

Finance update

We've recently issued three email reminders during w/c 28 January, w/c 25 February and w/c 18 March requesting establishments to upload any outstanding breakdown slips. At this stage of the process, we're now specifically concentrating on the period of April 2017 to March 2018. Without the contributions slips we're unable to successfully match and allocate any relating payments. As the end of the financial year is fast approaching it's important that all slips for financial year 2017/18 are submitted to us.

Please note that it's vital that your contribution slip is sent to us each month, either in advance of, or with the payment of contribution, but not after the payment has been made.

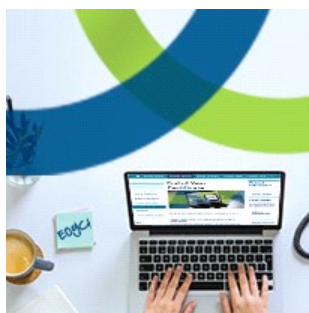
Last Updated: 21/03/2019 12:53

Related Information

[➤ Employer Portal](#)

[➤ Videos](#)

[➤ News archive](#)





**Get ready for
EOYC**

[Find out more >](#)

Latest News

The latest policy updates and announcements about the scheme and the news that affects it:

- [➤ We've made updates to the MCR template](#)
- [➤ Multi Academy Trust and Academy submission](#)
- [➤ Contributions drop-in session](#)
- [➤ More News](#)

Follow us on social media

Find us on social media to get the latest news and announcements from Teachers' Pensions



[➤ Like us on Facebook](#)



[➤ Join us on LinkedIn](#)



[➤ Follow us on X](#)



[➤ Subscribe to our YouTube channel](#)

[Contact Us](#)

[Manage Cookies](#)

[Glossary](#)

[Legal](#)

[Privacy](#)

[Security](#)

[Accessibility](#)

[Site Map](#)

[Links](#)

[Governance](#)

[Department for Education](#)

Copyright © Teachers' Pensions 2024 All rights reserved. Pension Scheme Registry Number 10005209 (2010 scheme and earlier); and 10276733 (2015 scheme)