

[Click here](#) to view with images
To ensure delivery to your inbox, please add us to your address book.



This month...

- > Monthly Data Collection (MDC) - last month for on-boarding
- > Opt out online
- > Supporting members - thank you
- > Member forms via email
- > New PDF of submitted web forms
- > Finance update
- > GMP update
- > Training update
- > Opening times over the festive season

Share this e-bulletin with a friend or colleague. They can [sign up here](#).

Monthly Data Collection (MDC) - last month for on-boarding

December is the final month for you as an employer, to start your on-boarding process to MDC.

If your on-boarding date was November, you should have sent in your service and salary by 7 December; please ensure you get this to us as a priority if you haven't already done so. If you're on-boarding in December, you'll need to have your file with us by 7 January 2018.

From 2018, MDC will become the only way to submit service and salary details. Failure to join MDC will result in you failing to meet your obligations as an employer and could result in escalation to the Pensions Regulator.

If you've not confirmed your on-boarding date, we need you to [contact us](#) immediately.

[Find out more >](#)



[Back to top](#)

Opt out online

As detailed in our September bulletin, the member opt out process is changing to online only (unless requested otherwise)

Supporting members - thank you

As already advised, we're making improvements to our contact channels for members. If you've provided support to

from January 2018. We'll confirm the exact date of the change in our January bulletin.

To allow members to complete this process smoothly, it's essential that all enrolment templates are submitted on time, allowing any previously opted out members to complete a new opt out form online.

[Find out more >](#)



[Back to top](#)

members recently when they've been unable to contact us via the Contact Centre, we'd like to extend our thanks.

Mondays and Fridays are our busiest days by a significant margin, so if you are encouraging a member to call us, could you advise them it may be better to try Tuesday - Thursday.



[Back to top](#)

Member forms via email

We've mentioned in previous bulletins the changes to the Data Protection Regulations which will be introduced in 2018 and we wanted to remind you about how you should provide member forms to us.

When sending Member forms to us, they should only be sent via the [Employer Portal](#) or by post. Forms should not be sent via email as this is a less secure method and may compromise member information.

[Find out more >](#)



[Back to top](#)

New PDF of submitted web forms

In November we introduced new functionality that captures a PDF of any web forms that you submit. Forms, which are submitted through Task Manager in the Employer Portal and Task Tracker in My Pension Online after 16 November, will now have a PDF copy available.

The new development will be very beneficial as they'll provide an unalterable snapshot in time that truly reflects the submission.

[Find out more >](#)



[Back to top](#)

Finance update

End of year certificate (EOYC) for 2016/17

Thank you to those of you who've submitted your EOYC by the deadline of 30 November 2017. We're currently working through these and we'll be in touch shortly if need be. If you haven't yet submitted an audited form, please submit it as soon as possible.

Monthly contribution - BACS payments

Please can all employers who submit contributions by BACS ensure that the data in reference field 10 is exactly the same (to the character) each month. This is to ensure that the payment is allocated to your employer account as smoothly and quickly as possible.

[Back to top](#)

GMP update

The GMP reconciliation of Deferred, Pensioner and Active members continues and good progress is being made with over 370,000 member records having been investigated to date.

On occasion we may need to contact you to aid with queries, however we understand the need to keep employer contact to a minimum and we'll ensure all other options have been exhausted before contacting you.

[Find out more >](#)



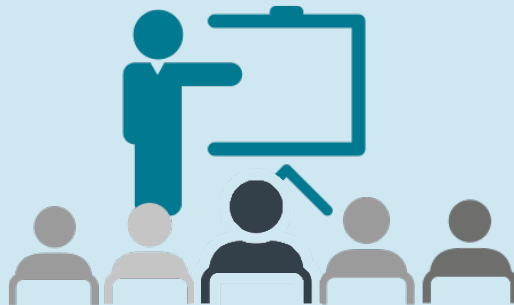
[Back to top](#)

Training update

Dates are now available for [seminars](#) being held across England and Wales in January. This month we've held events in London, Bolton, Cheltenham and Leeds. If you'd like us to hold a seminar near you then please email us on training@teacherspensions.co.uk

Our [webinar](#) programme is also available for January. We're currently working on a new webinar which should be available in the New Year.

[Find out more >](#)



[Back to top](#)

Opening times over the festive season

We'll be closed on Christmas Day, Boxing Day and New Year's Day. Normal opening hours will resume from 2 January 2018.

Seasons Greetings!



[Back to top](#)

You can keep up-to-date with important news, events and much more via our social media channels. Click the icons to follow us.



[BACK TO TOP](#)

The content of this email is based on our understanding of the current legislation governing the Teachers' Pension Scheme. In the event that there is a disagreement between the content of this email and the overriding Regulations, then the content of the Regulations will take precedence. The benefits of the Teachers' Pension Scheme, and the tax treatment of pensions may be subject to change in the future.



Copyright © Teachers' Pensions 2017 All rights reserved. Pension Scheme Registry Number 10005209 (2010 scheme and earlier); and 10276733 (2015 scheme)