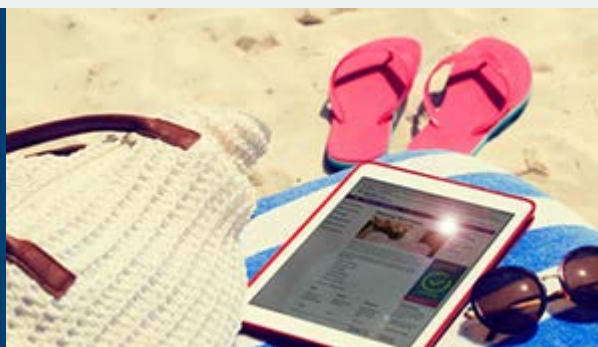


Hello

Read this e-newsletter to keep up to date with all the latest Teachers' Pension Scheme news and changes.



HELP AND GUIDANCE

Benefits of the Teachers' Pension Scheme



Your pension is just one of the great benefits of your career yet, understandably, retirement planning is often put on hold. To put yourself in the best position for when you rely on your pension, it's worth starting your retirement pot early. Discover your potential benefits today by taking a quick look at our '[Estimate your final pension value](#)' calculator.

You can also get a personalised estimate by using the modellers available through your [My Pension Online](#) (MPO) account; along with viewing your Benefit Statement and contacting us to keep your details up to date.

Find out more about the benefits you're building.

[Find out more >](#)

Pensions Increase and revaluation of Career Average pension benefits

General Data Protection Regulation (GDPR)



The Pensions Increase took effect from 9 April 2018.

The revaluation for Career Average benefits differ slightly based on your membership status, with active members receiving 4.6% and deferred members 3%. Both changes apply from 1 April 2018. More information about Pensions Increase can be found on the [updates](#) page of our website.

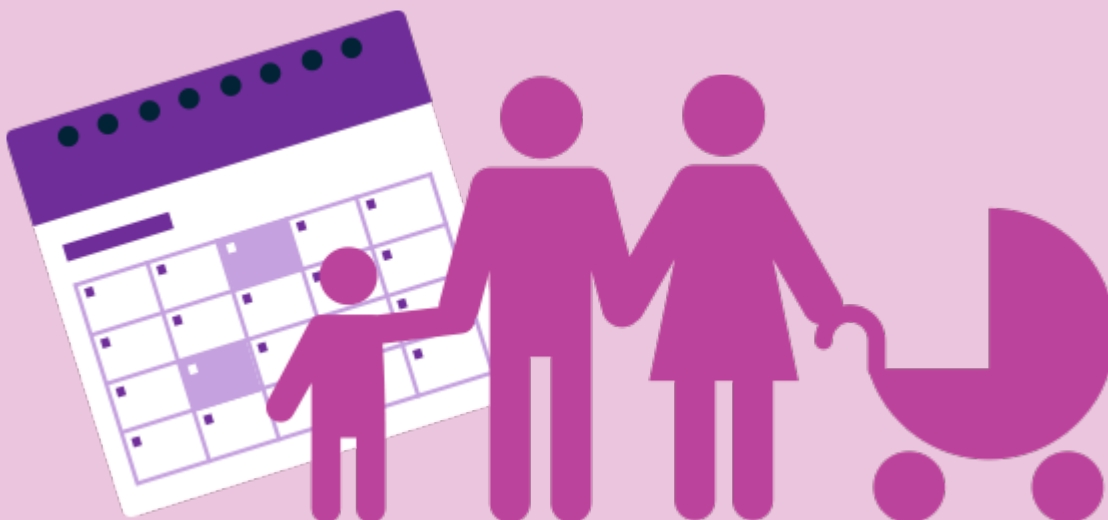


On 25 May 2018 GDPR came into effect across the European Union.

We've worked with the Department for Education, who are the Data Controller for the Scheme, to become compliant with this legislation to further safeguard your data. If you'd like more information on GDPR please take a look at our [factsheet](#).

SCHEME NEWS AND UPDATES

Think twice before opting out while on family leave



If you're due to go on maternity leave, or take any other type of [family leave](#), it's worth knowing the benefits of staying in the Scheme.

By opting out, you may save money in the short term but you'll lose valuable benefits that you would've accrued, including your in-service death benefits; all of which helps to ensure that you and your family are protected now and in the future.

[Find out more >](#)

How your service information is sent to us

My Pension Online (MPO) and your privacy



From April this year all employers were required to move to Monthly Data Collection (MDC) to send us your service information, rather than the previous annual submission.

This has great benefits, as you'll be able to view your updated Benefit Statement via [My Pension Online](#) each month. You'll also be able to track your service history more accurately and make sure it's correct and up to date.

[Find out more >](#)



Through MPO, your personal data will also be processed on the Database of Qualified Teachers (DQT). This is a record of qualified teachers, trainees and those no longer teaching.

The Department for Education wishes to communicate openly to help you understand how your data is processed through the DQT. If you'd like to know more, including details on your data protection rights, please visit the [privacy notice](#) for the Teacher Self-Service Portal.

[Find out more >](#)

WORKING FOR YOU

Stay connected to your pension



Staying connected to your pension and getting in touch when you've a query is getting easier.

- You can send us secure messages via My Pension Online (MPO) or contact us via [Facebook](#), [LinkedIn](#) and [Twitter](#) while you're on the go
- Phone our Contact Centre, where we've increased the number of representatives to answer your calls
- Keep an eye out for our new web chat service which we're looking to introduce to make it easier for you to speak to us online.

Make sure you stay in control of your pension by checking [MPO](#) regularly.

New look My Pension Online (MPO)

Changes to the (MPO) log in process



We've listened to member feedback to see how we could improve our service to you and, as a result, we've recently refreshed our member dashboard on MPO.

You'll notice a cleaner, more simplified homepage which will be easier to navigate.

View the improvements and visit [MPO](#) today.

[Find out more >](#)



We've updated the log in process to make it simpler to use but with the same level of security. The new process follows:

Step 1 - enter an email address and full password (not just selected characters)

Step 2 - enter specific characters from your PIN.

Additionally, there are improvements to the reset and unlock form and the temporary password process.

[Find out more >](#)

Top tips

You know you have a teacher's pension, but are you making the most of it?

Take a look at our Top tips [video](#) to understand the easy steps you can take to start to get more out of your pension. Why not take a look now and start planning for your future?

You can keep up-to-date with important news, events and much more via our social media channels. Click the icons to follow us.



Log in to [My Pension Online](#) today.

Teachers' Pensions | For Members



Contact us:
0345 6066166 | 8.30am - 6pm Monday to Friday

Copyright © Teachers' Pensions 2018 All rights reserved.
Pension Scheme Registry Number 10005209 (2010 scheme and earlier); and 10276733 (2015 scheme)

The content of this email is based on our understanding of the current legislation governing the Teachers' Pension Scheme. In the event that there is a disagreement between the content of this email and the overriding Regulations, then the content of the Regulations will take precedence. The benefits of the Teachers' Pension Scheme, and the tax treatment of pensions may be subject to change in the future.